

HANDLES AND KNOBS



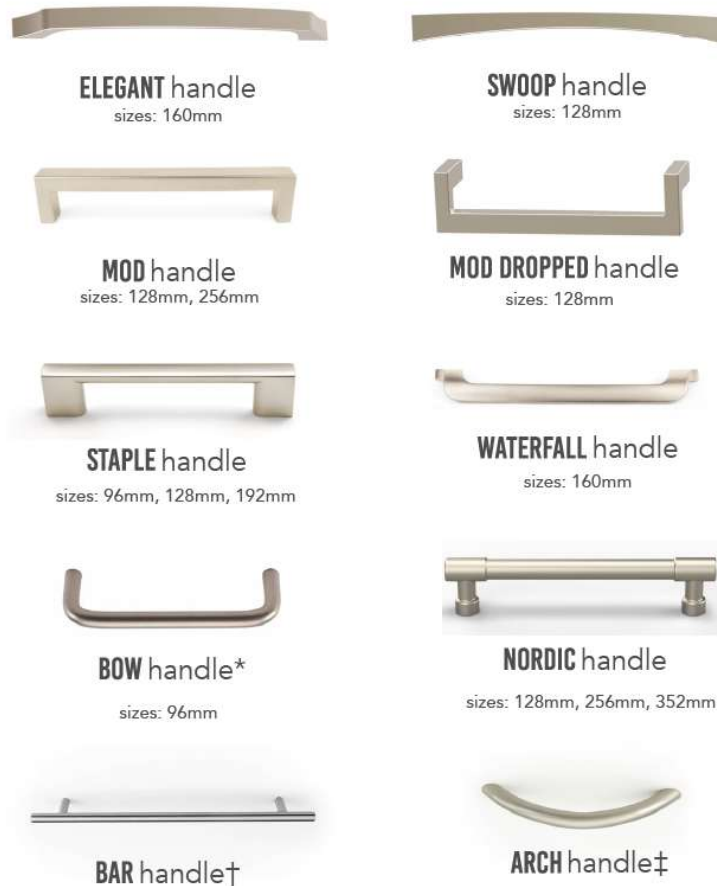
KNOBS

Unless otherwise noted knobs are available in all finishes except Bronze.



HANDLES

Unless otherwise noted handles are available in all finishes except Bronze.



LEATHER WRAPPED

Our new leather wrapped handle collection gives the best of both worlds by combining two contemporary looks into one; faux leather and classic metal. Coordinate with our leather wrapped poles for the full luxury look.



NORDIC LEATHER handle

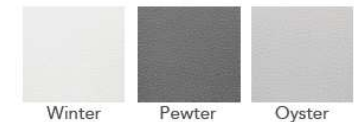
sizes: 128mm, 256mm



LUXE LEATHER handle

sizes: 128mm, 256mm

LEATHER OPTIONS -



*SOME STYLES MAY NOT BE AVAILABLE IN ALL FINISHES. SEE HANDLE SPEC SHEET FOR MORE INFORMATION.